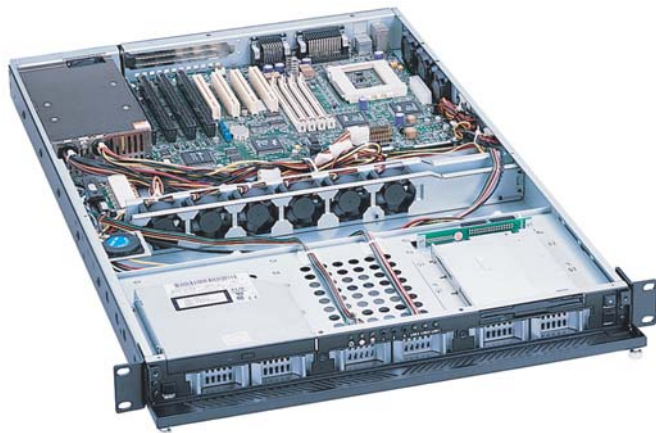


CHASSIS PLANS

F2CHASSIS



Advantages

- Compact 1U x 25.6-inch (650mm) design
- Front door is fastened via thumb screws
- 150W- 460W ATX power supply (1U form factor)
- One 5.25-inch slim CD and one 3.5-inch slim FDD and three Ultra 160 hot-swap SCSI drives
- Removable rack ears for benchtop applications
- Six 7.0CFM center mount fans and three 8.6CFM rear mount fans are included.

Support

- Superior pre-sales and post-sales technical support
- All products carry a one year limited warranty

Customization

- Custom paint and logo services available
- Front panel includes an indicator for disk drive activity.
- Nine internal fans provide positive pressurization of chassis



F2CHASSIS

The F2 Series chassis is a high performance design in a low cost 1U rackmount enclosure. Feature rich, the F2 Series is a solid, robust design which will meet the most rigorous and demanding requirements. This chassis is ideal for high density server applications including collocation.

The enclosure is constructed of 18 gauge steel, clear zinc plated for corrosion protection and an attractive appearance. The front panel is attractively detailed and is of heavier gauge than the chassis.

There is more than ample drive storage. One slim CD and one slim floppy drive can be installed. In addition, three hot-swap SCSI SCA-2 drives can be installed.

A door covers and protects the drives. Accessible behind the door is the power and reset switches as well as the power-on and drive activity LED's. The LED's are visible through the door when it is closed.

The chassis is particularly well cooled for a 1U. Cooling is provided by six 40mm 7CFM ball bearing fans in addition to three 40mm 8.6FCM exhaust fans. The six fan group is mounted mid-chassis. Airflow is in over the drives and out the rear of the chassis.

The F2 Chassis provides for mounting a standard EATX motherboard up to 12 x 13-inches. One plug-in card can be installed using the included 32-bit riser card.

SPECIFICATION

Dimensions

19" (wide) x 1U (1.7") (high) x 25.6(deep)

Weight - 35 lbs / 16 kgs

Drive Capacity

One slim CD drive - front accessible

One slim floppy drive - front accessible

Three hot swap SCSI SCA-2 drives - front accessible

Front Panel Controls

Power switch - Black momentary pushbutton with 2 position .100 header for board connection

Reset switch - Black momentary pushbutton with 2 position .100 header for board connection

Power LED - green with 3 position .100 header for board connection

Drive Activity - Red with 2 position .100 header for board connection

Switch and LED connectors are labeled at the connector end.

Rear Panel Details

1 Plug-in card slot

ATX I/O Shield

Cooling

Six 40mm 7CFM cooling fans

Three 40mm 8.6CFM exhaust fans

Power Supply

Not included. Accepts 1U supply. Rear mounted.

Optional 12, 24 or 48VDC supplies available

Motherboard Mounting

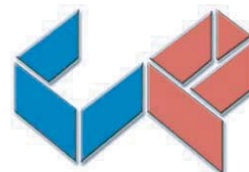
Standard 12 x 13 inch EATX motherboard

Motherboard adapter plate accommodates any motherboard

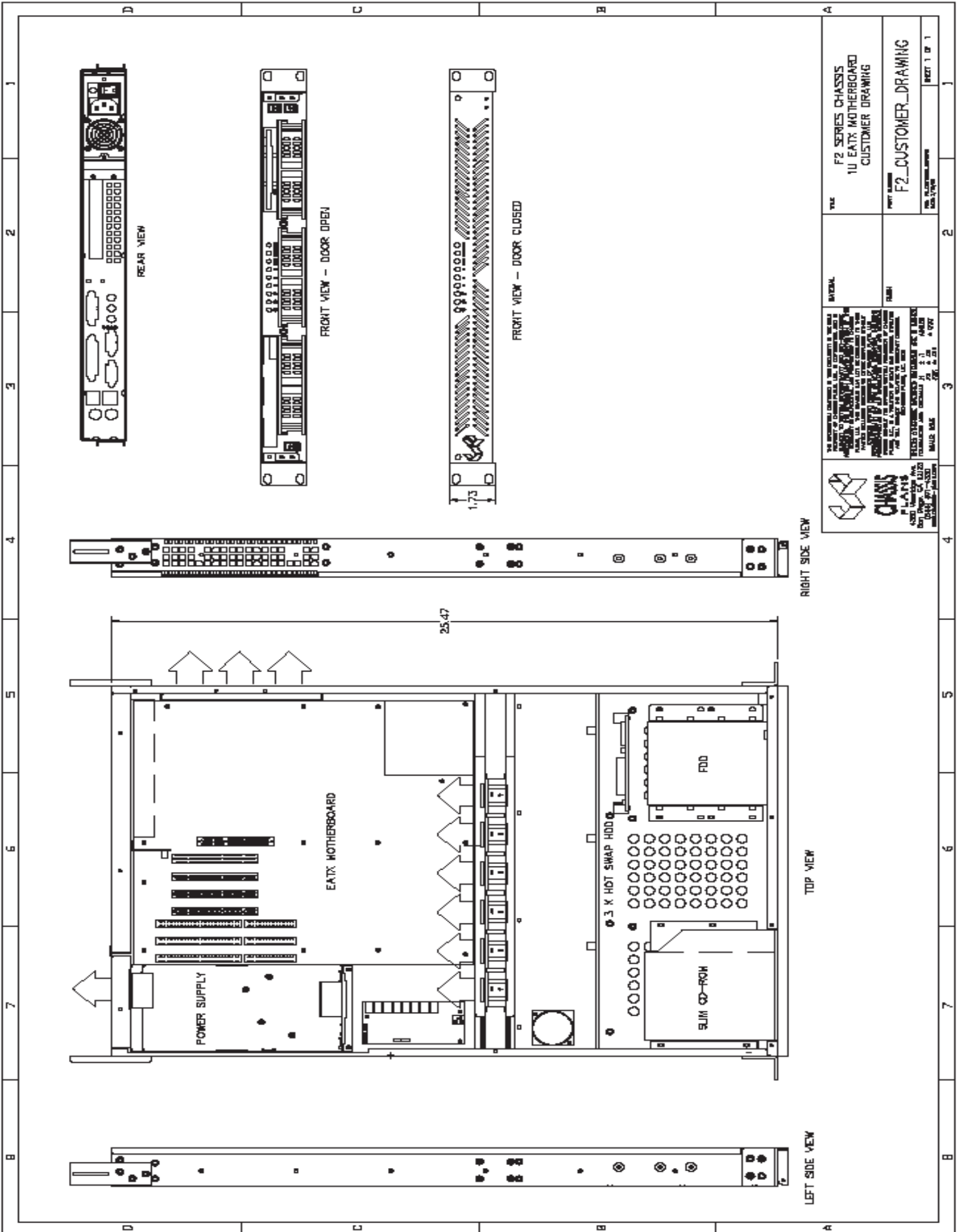
Plug-in I/O Cards

Accommodates one plug-in I/O card

Includes 32-bit standard 5V PCI riser card



CHASSIS
PLANS



 <p>CHASSIS PLANS 4360 V Iewridge Ave Ste. B San Diego, CA 92123 (858) 571-4330</p>		<p>PLEASE CONTACT US FOR THE LATEST INFORMATION ON OUR PRODUCTS AND SERVICES. WE ARE CURRENTLY OFFERING A 10% DISCOUNT ON ALL NEW ORDERS. TO TAKE ADVANTAGE OF THIS OFFER, PLEASE CALL US AT (858) 571-4330 OR VISIT OUR WEBSITE AT WWW.CHASSISPLANS.COM. THIS OFFER IS VALID UNTIL 12/31/2010. THANK YOU FOR YOUR BUSINESS!</p>	
TITLE	F2 SERIES CHASSIS 1U EATX MOTHERBOARD CUSTOMER DRAWING	INTERNAL	
PART NUMBER	F2_CUSTOMER_DRAWING	DATE	
REV. NUMBER	001.001	REV. DATE	
		2	3
		4	5
		6	7
		8	9
		10	11
		12	13
		14	15
		16	17
		18	19
		20	21
		22	23
		24	25
		26	27
		28	29
		30	31
		32	33
		34	35
		36	37
		38	39
		40	41
		42	43
		44	45
		46	47
		48	49
		50	51
		52	53
		54	55
		56	57
		58	59
		60	61
		62	63
		64	65
		66	67
		68	69
		70	71
		72	73
		74	75
		76	77
		78	79
		80	81
		82	83
		84	85
		86	87
		88	89
		90	91
		92	93
		94	95
		96	97
		98	99
		100	101
		102	103
		104	105
		106	107
		108	109
		110	111
		112	113
		114	115
		116	117
		118	119
		120	121
		122	123
		124	125
		126	127
		128	129
		130	131
		132	133
		134	135
		136	137
		138	139
		140	141
		142	143
		144	145
		146	147
		148	149
		150	151
		152	153
		154	155
		156	157
		158	159
		160	161
		162	163
		164	165
		166	167
		168	169
		170	171
		172	173
		174	175
		176	177
		178	179
		180	181
		182	183
		184	185
		186	187
		188	189
		190	191
		192	193
		194	195
		196	197
		198	199
		200	201
		202	203
		204	205
		206	207
		208	209
		210	211
		212	213
		214	215
		216	217
		218	219
		220	221
		222	223
		224	225
		226	227
		228	229
		230	231
		232	233
		234	235
		236	237
		238	239
		240	241
		242	243
		244	245
		246	247
		248	249
		250	251
		252	253
		254	255
		256	257
		258	259
		260	261
		262	263
		264	265
		266	267
		268	269
		270	271
		272	273
		274	275
		276	277
		278	279
		280	281
		282	283
		284	285
		286	287
		288	289
		290	291
		292	293
		294	295
		296	297
		298	299
		300	301
		302	303
		304	305
		306	307
		308	309
		310	311
		312	313
		314	315
		316	317
		318	319
		320	321
		322	323
		324	325
		326	327
		328	329
		330	331
		332	333
		334	335
		336	337
		338	339
		340	341
		342	343
		344	345
		346	347
		348	349
		350	351
		352	353
		354	355
		356	357
		358	359
		360	361
		362	363
		364	365
		366	367
		368	369
		370	371
		372	373
		374	375
		376	377
		378	379
		380	381
		382	383
		384	385
		386	387
		388	389
		390	391
		392	393
		394	395
		396	397
		398	399
		400	401
		402	403
		404	405
		406	407
		408	409
		410	411
		412	413
		414	415
		416	417
		418	419
		420	421
		422	423
		424	425
		426	427
		428	429
		430	431
		432	433
		434	435
		436	437
		438	439
		440	441
		442	443
		444	445
		446	447
		448	449
		450	451
		452	453
		454	455
		456	457
		458	459
		460	461
		462	463
		464	465
		466	467
		468	469
		470	471
		472	473
		474	475
		476	477
		478	479
		480	481
		482	483
		484	485
		486	487
		488	489
		490	491
		492	493
		494	495
		496	497
		498	499
		500	501
		502	503
		504	505
		506	507
		508	509
		510	511
		512	513
		514	515
		516	517
		518	519
		520	521
		522	523
		524	525
		526	527
		528	529
		530	531
		532	533
		534	535
		536	537
		538	539
		540	541
		542	543
		544	545
		546	547
		548	549
		550	551
		552	553
		554	555
		556	557
		558	559
		560	561
		562	563
		564	565
		566	567
		568	569
		570	571
		572	573
		574	575
		576	577
		578	579
		580	581
		582	583
		584	585
		586	587
		588	589
		590	591
		592	593
		594	595
		596	597
		598	599
		600	601
		602	603
		604	605
		606	607
		608	609
		610	611
		612	613
		614	615
		616	617
		618	619
		620	621
		622	623
		624	625
		626	627
		628	629
		630	631
		632	633
		634	635
		636	637
		638	639
		640	641
		642	643
		644	645
		646	647
		648	649
		650	651
		652	653
		654	655
		656	657
		658	659
		660	661
		662	663
		664	665
		666	667
		668	669
		670	671
		672	673
		674	675
		676	677
		678	679
		680	681
		682	683
		684	685
		686	687
		688	689
		690	691
		692	693
		694	695
		696	697
		698	699
		700	701
		702	703
		704	705
		706	707
		708	709
		710	711
		712	713
		714	715
		716	