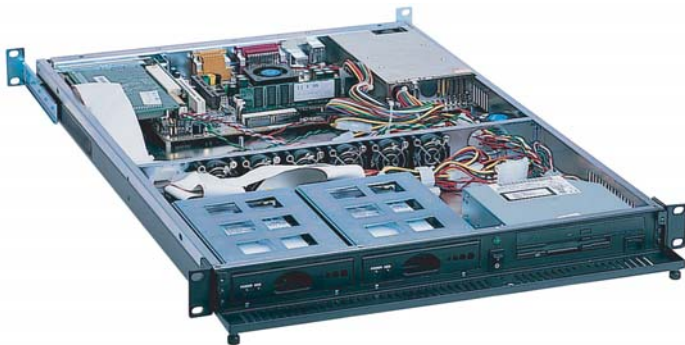


CHASSIS PLANS

F4CHASSIS



Advantages

- Compact 1U x 25.6-inch (650mm) design
- Front door is fastened via thumb screws
- 150W- 460W ATX power supply (1U form factor)
- One 5.25-inch slim CD and one 3.5-inch slim FDD and two hot-swap IDE drives
- Removable rack ears for benchtop applications
- Six 7.0CFM center mount fans are included and thermal management card is installed

Support

- Superior pre-sales and post-sales technical support
- All products carry a one year limited warranty

Customization

- Custom paint and logo services available
- Front panel includes an indicator for disk drive activity.
- Nine internal fans provide positive pressurization of chassis



F4CHASSIS

The F4 Series chassis is a high performance design in a low cost 1U rackmount enclosure. Feature rich, the F4 Series is a solid, robust design which will meet the most rigorous and demanding requirements. This chassis is ideal for high density server applications including collocation.

The enclosure is constructed of 18 gauge steel, clear zinc plated for corrosion protection and an attractive appearance. The front panel is attractively detailed and is of heavier gauge than the chassis.

There is a medium amount of drive storage. The F4 provides for one slim CD-ROM and one slim floppy drive. In addition, two hot swap IDE drives are provided. This drive combination is ideal for low cost mission critical applications requiring hot swap drives.

With this drive combination, the F4 is ideally suited for use as a low end Web Server, Firewall Server, Proxy Server, VPN Gateway, DNS Server, ISP, Email Server, High-End Workstation

A door covers and protects the drives. Accessible behind the door is the power and reset switches as well as the power-on and drive activity LED's. The LED's are visible through the door when it is closed.

Cooling is provided by six fans which are mounted mid-chassis.

The F4 Chassis provides for mounting a standard EATX motherboard up to 12 x 13-inches. One plug-in card can be installed using the included riser card.

SPECIFICATION

Dimensions

19" (wide) x 1U (1.7") (high) x 25.6 (deep)

Weight - 22 lbs / 10 kg

Drive Capacity

One slim CD ROM drive - front accessible

One slim floppy drive - front accessible

Two hot-swap IDE drives - front accessible

SCAM Compliant Drive Backplanes Support SE, LVD, U2 & Ultra 160 Systems, Transfer Rate Up to 160MB/Sec

Front Panel Controls

Power switch

System Reset switch

Power LED

Drive Activity LED

LAN LED

Switch and LED connectors are labeled at the connector end.

Rear Panel Details

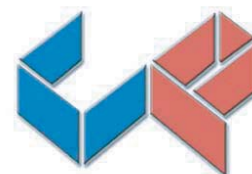
1 Plug-in card slot

ATX I/O Shield

Cooling

Six 40mm 7CFM fans

Fans mounted mid-chassis



CHASSIS
PLANS

SPECIFICATION CONT.

Power Supply

Not included. Accepts rear mounted 1U supply.

Optional 12, 24 or 48VDC supplies available

Motherboard Mounting

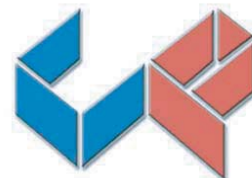
Standard 12 x 13 inch EATX motherboard

Motherboard adapter plate accommodates any motherboard

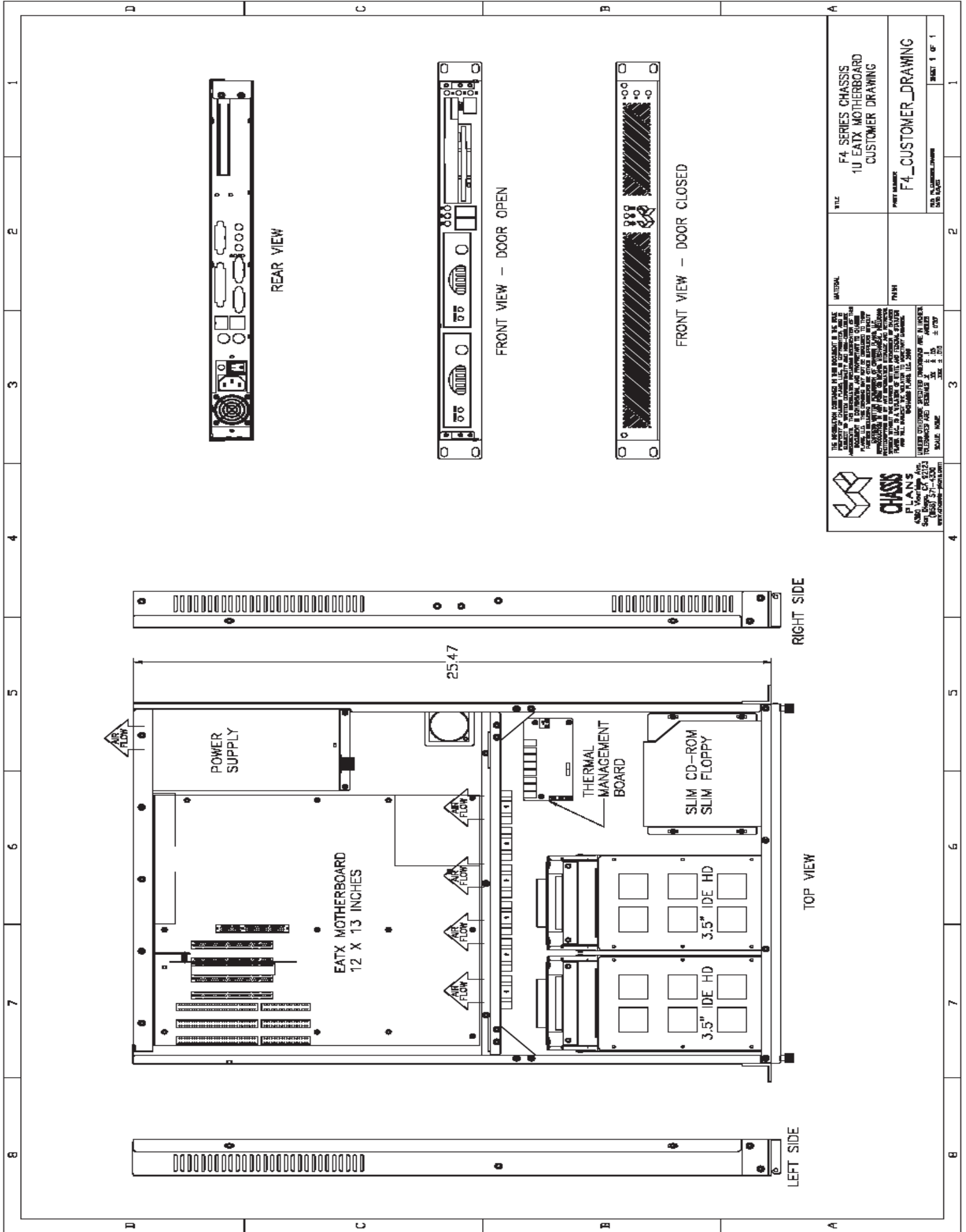
Plug-in I/O Cards

Accommodates one full length plug-in I/O card

Includes 32-bit standard 5V PCI riser card



CHASSIS
PLANS



REAR VIEW

FRONT VIEW - DOOR OPEN

FRONT VIEW - DOOR CLOSED

RIGHT SIDE

TOP VIEW

LEFT SIDE



THE INFORMATION CONTAINED IN THIS DOCUMENT IS THE PROPERTY OF CHASSIS PLANS, LLC. IN NO EVENT SHALL THE INFORMATION CONTAINED HEREIN BE REPRODUCED OR TRANSMITTED IN ANY FORM OR BY ANY MEANS, ELECTRONIC OR MECHANICAL, INCLUDING PHOTOCOPYING, RECORDING, OR BY ANY INFORMATION STORAGE AND RETRIEVAL SYSTEM, WITHOUT THE EXPRESS WRITTEN PERMISSION OF CHASSIS PLANS, LLC. THIS DOCUMENT IS UNCLASSIFIED EXCEPT WHERE SHOWN OTHERWISE. THIS DOCUMENT IS UNCLASSIFIED EXCEPT WHERE SHOWN OTHERWISE. THIS DOCUMENT IS UNCLASSIFIED EXCEPT WHERE SHOWN OTHERWISE. THIS DOCUMENT IS UNCLASSIFIED EXCEPT WHERE SHOWN OTHERWISE.

TITLE	F4 SERIES CHASSIS 1U EATX MOTHERBOARD CUSTOMER DRAWING	NATIONAL	
PROJECT NUMBER	F4_CUSTOMER_DRAWING	PNRN	
FILE IN CHASSIS PLANS		SCALE	AS SHOWN