

CHASSIS PLANS

F5CHASSIS



Advantages

- Compact 1U x 20-inch (508mm) design
- Front panel is open for easy access to front drives
- 150W- 460W ATX power supply (1U form factor)
- Two 5.25-inch and one 3.5-inch front accessible drive bays
- Removable rack ears for benchtop applications
- Two 2x4 cm, 7CFM rear mounted fans included

Support

- Superior pre-sales and post-sales technical support
- All products carry a one year limited warranty

Customization

- Custom paint and logo services available
- Front panel includes an indicator for disk drive activity.
- Two 7CFM rear-mounted fans provide positive pressurization



F1 CHASSIS

The F1 Series chassis is a high performance design in a low cost 1U rackmount enclosure. Feature rich, the F1 Series is a solid, robust design which will meet the most rigorous and demanding requirements. This chassis is ideal for high density server applications including collocation.

The enclosure is constructed of 18 gauge steel, clear zinc plated for corrosion protection and an attractive appearance. The front panel is attractively detailed and is of heavier gauge than the chassis.

There is more than ample drive storage. Two drives configurations are possible. One configuration allows one external 5.25 inch drive, external 3.5 inch drive and two internal 3.5 inch drives.

The other configuration allows for two external 5.25 inch drives and one external 3.5 inch drive. The externally accessible drives are ideally suited for removable drive carriers.

A door covers and protects the drives. Accessible behind the door is the power and reset switches as well as the power-on and drive activity LED's. The LED's are visible through the door when it is closed.

Cooling is provided by two fans with a third fan optional.

The F1 Chassis provides for mounting a standard EATX motherboard up to 12 x 13-inches. One plug-in card can be installed using the included riser card.

SPECIFICATION

Dimensions

19" (wide) x 1U (1.7") (high) x 23.6(deep)

Drive Capacity

One 5-1/4 inch drive - front accessible

One 3-1/2 inch drive - front accessible

Two 3-1/2 inch drives -internal

- or -

Two 5-1/4 inch drives - front accessible

One 3-1/2 inch drive - front accessible

Front Panel Controls

Power switch - Black momentary pushbutton with 2 position .100 header for board connection

Reset switch - Black momentary pushbutton with 2 position .100 header for board connection

Power LED - green with 3 position .100 header for board connection

Drive Activity - Red with 2 position .100 header for board connection

Switch and LED connectors are labeled at the connector end.

Rear Panel Details

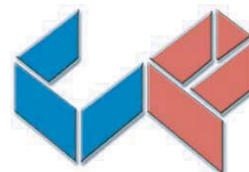
1 Plug-in card slot

ATX I/O Shield

Cooling

Five 40mm 8.9CFM fans with tach signal

Negative chassis pressure



CHASSIS
PLANS

SPECIFICATION CONT.

Power Supply

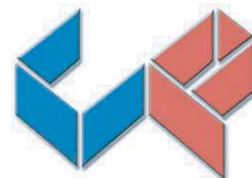
Not included. Accepts internal 1U supply.
Optional 12, 24 or 48VDC supplies available

Motherboard Mounting

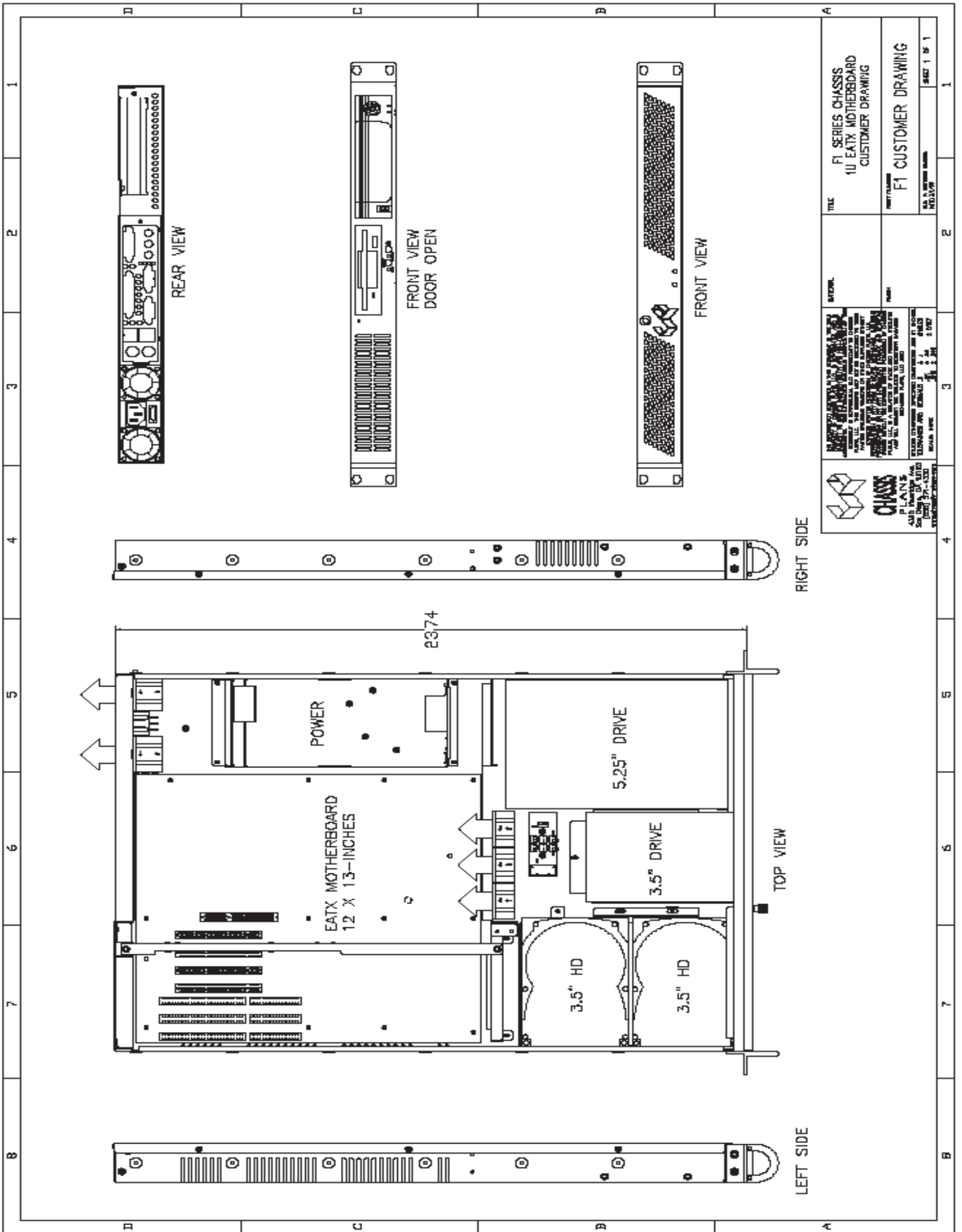
Standard 12 x 13 inch EATX motherboard
Motherboard adapter plate accommodates any motherboard

Plug-in I/O Cards

Accommodates one plug-in I/O card
Includes 32-bit standard 5V PCI riser card



CHASSIS
PLANS



TITLE	F1 SERIES CHASSIS 1U EATX MOTHERBOARD CUSTOMER DRAWING
DATE	
REV	
BY	
CHECKED	
APPROVED	
SCALE	AS SHOWN
SHEET	1 OF 1